

WHAT IS SEXUAL ASSAULT?

Sexual assault is a violent crime in which the abuser uses sex to inflict violence and humiliation on the victim, or to exert power and control over the victim. Sexual assault can include several kinds of crime: rape, incest, sexual harassment, child molestation, marital rape, exposure, and voyeurism.



Every 60 seconds, 1.3 women (18+) in the U.S. are forcibly raped. 78 each hour; 1,871 each day; 683,000 each year.



In the U.S. rape is the most costly crime to its victims totaling \$127 billion/year (medical costs, lost earnings, pain & suffering, & lost quality of life).



There are currently 6,234 registered sex offenders in Arkansas

CONNECT WITH US

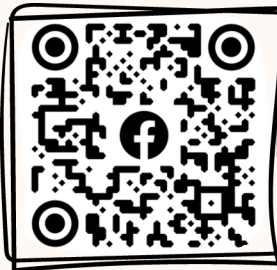
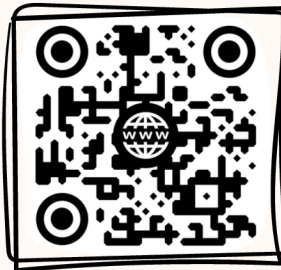
P.O. Box 3837

Little Rock, AR 72203

(501) 246-3276

www.arkcasa.org

STAY CONNECTED.
CHECK US OUT
ONLINE.



SEXUAL ASSAULT

FACTS, REPORTING OPTIONS
FOR ADULTS, AND MEDICAL
EXAMINATIONS



ABOUT SEXUAL ASSAULT



- ANYONE CAN BE A POTENTIAL VICTIM OF SEXUAL ASSAULT.
 - This is regardless of age, race, religion, occupation, education, or physical description.
- MOST SEXUAL ASSAULTS ARE PERPETRATED BY SOMEONE THE VICTIM KNOWS.
 - Most offenders are serial offenders.

8 OUT OF 10
SEXUAL ASSAULTS ARE
COMMITTED BY SOMEONE
THE VICTIM KNOWS!

- MOST ABUSERS LOOK, SOUND, AND ACT "NORMAL"
 - An offender of sexual assault could be anyone.

REPORTING OPTIONS (FOR ADULTS)

CALL 911.

- If you are in immediate danger, dial 911. Help will come to you, wherever you are.

CONTACT THE LOCAL POLICE.

- Call the direct line of your local police station or visit the station in person. If you are on a college campus, you may also be able to contact campus based law enforcement.

REPORTING AN ASSAULT TO THE
AUTHORITIES DOES NOT MEAN
YOU HAVE TO PRESS CHARGES.

VISIT A MEDICAL CENTER.

- Go to your nearest medical center to have a sexual assault medical exam.
 - *Tell a medical professional if you wish to report the crime.*

NO REPORT

- You have the option not to report your assault with law enforcement. You are still able to receive a sexual assault medical exam if you choose not to report.

INFORMAL REPORT

- This means the police will write down what happened, and you sign a statement saying you do not want the matter investigated.

FORMAL STATEMENT

- This means a full report of the incident is typed and signed by you when you are satisfied with the contents. A report can take several hours to complete. There may be a follow-up with the detective 72 hours after the initial report. The police will then investigate the incident; there is no time frame for the investigation.

MEDICAL EXAM

WHAT IS THE EXAM?

Also known as the "rape kit" or "forensic exam," it is a physical examination performed by a medical professional for the purpose of collecting legal evidence. The presence or absence of physical evidence DOES NOT prove whether a person has been sexual assaulted; rather, it provides supportive evidence to be used during the legal proceedings if the case is prosecuted.

SEXUAL ASSAULT HOSPITAL PROTOCOL

**Arkansas Code 12-12-403(a). 403(b)(1)
(A), 403(B), 403 (2)(A)**

1. Patient may ask if they would like an advocate.
2. If the sexual assault occurred within 96 hours, the Emergency Department will offer/provide a Rape Kit exam.
3. The incident does not have to be reported to law enforcement in order to provide Rape Kit exam.
4. If patient wants to report for investigation, make police report.
5. No exam shall be performed without the patient's consent.
6. Basic health exam and STI/pregnancy prophylaxis should still be offered even if Rape Kit collection is declined.
7. Rape Kit is provided at no cost to the patient.